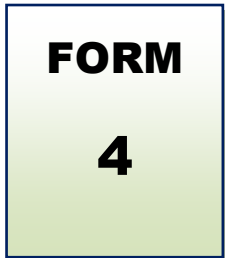




Return Form to:

**PICO IES Group Ltd**  
 Pico Building, 12A Dai Fat Street  
 Tai Po Industrial Estate, Tai Po, N.T.,  
 H.K.



**Contact:** +852 3713 0546  
**Fax:** +852 2660 4671

**Attn:** Ms. Chloe Ma

**Email:** [chloe.ma@hk.pico.com](mailto:chloe.ma@hk.pico.com)

**PATA Travel Mart 2017**  
**September 13-15, Macao SAR**  
**DEADLINE: August 14, 2017**

**Furniture Orders**

*This form must be completed and returned by every exhibitor (if needed).*

**Company Name:** \_\_\_\_\_ **Country:** \_\_\_\_\_

**Booth No.:** \_\_\_\_\_ **Contact Person:** \_\_\_\_\_ **Email:** \_\_\_\_\_

**Tel:** \_\_\_\_\_ **Website:** \_\_\_\_\_ **Date:** \_\_\_\_\_

The Standard Shell Scheme Package stand includes:-

- One (1) Round Table | Four (4) Chairs | One (1) Wastepaper Basket

**ORDER ONLY YOUR ADDITIONAL EQUIPMENT!**

Code	Items	Dimension (cm)	USD	HKD	QTY	Total Price
CW14	WHITE FOLDING CHAIR	46 x 45 x 77cm [H]		98		
CN39	MULIN BLACK CHAIR	49 x 58 x 82cm [H]		145		
UW45	WHITE BOMBO STOOL	Ø44 x 39 x 66-86cm [H]		500		
HW5	WHITE BOX SOFA (IVORY)	72 x 64 x 66cm [H]		1070		
HW20	WHITE CANAPE SOFA	158 x 68 x 67cm[H]		1940		
TW27	WHITE STAR TABLE	Ø80 x 78cm[H]		489		
TW53	WHITE GEM TABLE	77 x 77 x 76cm [H]		600		
TW34	WHITE TINNILY BAR TABLE	Ø60 x 110cm[H]		730		
TW11	WHITE ANNE TABLE	120 x 60 x 75cm [H]		645		
TW18	WHITE LACK COFFEE TABLE	55 x 50 x 42cm [H]		215		
PF01	INFORMATION COUNTER	1030L x 535W x 750Hmm		620		
PF02	LOW GLASS SHOWCASE	1030L x 535W x 750Hmm		1033		
PF03	LOCKABLE CUPBOARD	1030L x 535W x 750Hmm		685		
PF04	TALL GLASS SHOWCASE WITH 2 NOS. DOWNLIGHTS	1030L x 535W x 2470Hmm		2717		
PF07	TALL DISPLAY CUBE	535L x 535W x 750Hmm		489		
PF08	LOW DISPLAY CUBE	535L x 535W x 500Hmm		413		
EW01	WASTE PAPER BASKET			44		
PN10	BLACK DOCUMENTS DISPLAY STAND	27 x 30 x 144cm [H]		715		
AN24	BLACK COAT HANGER	180cm [H]		400		
ED01	LOCKABLE DOOR	950W x 1910Hmm		707		
ED02	FOLDING DOOR	950W x 2000Hmm		544		
FS01	FLAT SHELF	1000L x 300Wmm		217		
SS01	SLOPE SHELF	1000L x 300Wmm		217		
				<b>Total cost (USD)</b>		
				<b>TAX 10%</b>		
				<b>Grand Total</b>		

\* Please indicate the locations of the above requirements on FORM 5 (Service location Plan)

\* Late Orders & Payment (received after the deadline, August xx) may not be provided and if available, will be subject to a 20% surcharge, and 30% surcharge for onsite orders (received after the deadline, September xx). Priority will be given to advance orders.

**PLEASE NOTE:**

Services will not be provided until payment has been received. Payment should be in favour of: PICO IES Group Ltd

**For Transfers:**

CURRENCY	USD	HKD
ACCOUNT NAME	PICO IES GROUP LTD	PICO IES GROUP LTD
BANK	Hong Kong & Shanghai Banking Corporation Limited	Hong Kong & Shanghai Banking Corporation Limited
ACCOUNT NUMBER	037-0-606469	037-880606-001
SWIFT CODE	HSBCHKHHHKH	HSBCHKHHHKH

**Please email or fax to us a copy of your payment slip for confirmation.**

1. If payment is drawn in a foreign currency, please include the **bank commission** and please also note if the final amount received is less than the invoiced amount due to exchange rate variance, you will be responsible for reimbursing the relevant beneficiary.
2. All of received amount for the rental item (USD or MOP) must same with the invoice. Please pay the payment with full amount.
3. Late Orders & Payment (received after the deadline, August xx) may not be provided and if available, will be subject to a 20% surcharge and 30% surcharge for onsite orders (received after the deadline, September xx). Priority will be given to advance orders.
4. 20% cancellation fees will be imposed for cancellation of confirmed orders. Orders cancelled in set-up days and show days, the exhibitor will be liable for full cost of rental, and there will be no refunds.
5. Exhibitor must indicate the furniture point on Form 5 (Service Location Plan). Otherwise, the furniture will be place the supply point on contractor's discretion. **PICO IES Group Ltd** will not be responsible for any relocation. All relocation cost will be at exhibitor's expense.
6. All Prices are in USD (overseas) or MOP (local).
7. All materials to be available subject to availability and first come first served basis.
8. Incredible design is entitled to add, alter, or amend these terms and conditions at its sole and absolute discretion without prior notice.

# FURNITURE



**CW14**  
WHITE FOLDING CHAIR  
460 x 450 x 770mm(H)



**CN39**  
MULIN BLACK CHAIR  
490 x 580 x 820mm(H)



**UW45**  
WHITE BOMBO STOOL  
Ø440 x 390 x 660-860mm(H)



**HW5**  
WHITE BOX SOFA  
(IVORY)  
720 x 640 x 660mm(H)



**HW20**  
WHITE CANAPE SOFA  
(IVORY)  
1580 x 680 x 670mm(H)



**TW27**  
WHITE STAR TABLE  
Ø800 x 780mm(H)



**TW53**  
WHITE GEM TABLE  
770 x 770 x 760mm(H)



**TW34**  
WHITE TINNILY BAR  
TABLE  
Ø600 x 1100mm(H)



**TW11**  
WHITE ANNE TABLE  
1200 x 600 x 750mm(H)



**TW18**  
WHITE LACK COFFEE  
TABLE  
550 x 550 x 450mm(H)



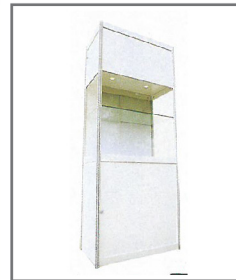
**PF01**  
INFORMATION COUNTER  
1030 x 535 x 750mm(H)



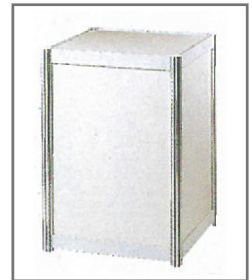
**PF02**  
LOW GLASS SHOWCASE  
1030 x 535 x 1000mm(H)



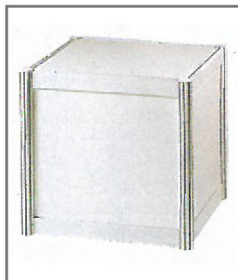
**PF03**  
LOCKABLE CUPBOARD  
1030 x 535 x 750mm(H)



**PF04**  
TALL GLASS SHOWCASE  
WITH 2 NOS. DOWNLIGHTS  
1030 x 535 x 2170mm(H)



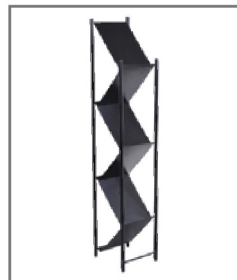
**PF07**  
TALL DISPLAY CUBE  
535 x 535 x 750mm(H)



**PF08**  
LOW DISPLAY CUBE  
535 x 535 x 500mm(H)



**EW01**  
WASTE PAPER BASKET



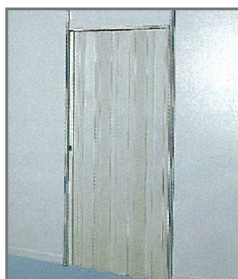
**PN10**  
BLACK DOCUMENTS  
DISPLAY STAND  
270 x 300 x 1440mm(H)



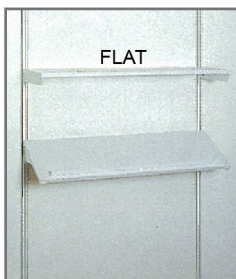
**AN24**  
BLACK COAT HANGER  
1800mm(H)



**ED01**  
LOCKABLE DOOR  
950 x 1910mm(H)



**ED02**  
FOLDING DOOR  
950 x 2000mm(H)



**FS01**  
FLAT SHELF  
1030 x 300mm(W)



**SS01**  
SLOPED SHELF  
1030 x 300mm(W)